

LightTPD Has Been Deprecated at C•CURE 9000 Version 3.00

C•CURE 9000 TAB

Article ID: SWH-TAB-nID-000035061

Published: Jul-14-2022

Background

LightTPD version 1.4.32 can sometimes fail local Cybersecurity vulnerability scans. The latest versions from LightTPD are only provided for the Linux operating system and cannot be updated on a Windows environment for use by ICU utility. Johnson Controls has decided to no longer install LightTPD with C•CURE 9000 in version 3.00 and all future versions.

The C•CURE 9000 version 3.00 Administration Workstation client will be able to natively send firmware from a C•CURE 9000 server to an iSTAR controller that is running with a firmware version of at least 6.8.8. ICU will no longer have the capacity to update iSTAR controllers via ICU without LightTPD. Alternatively, customers can use the iSTAR controller's web page to upload firmware to iSTARs.

Solution

Customers running C•CURE 9000 versions *prior* to 3.00 must complete the following steps to remove LightTPD from their systems if there is no available timeframe to upgrade their systems.

- Uninstall LightTPD from the C•CURE server.

LightTPD is deployed as part of the ICU installed, by default, on the victor Application Server.

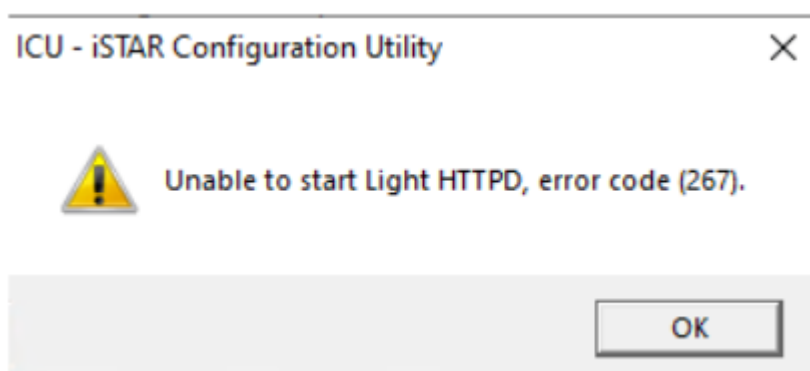
It may exist on other computers to which the ICU installer was independently deployed (i.e., an installation technician will use ICU to deploy a controller and directly connect via ethernet to perform an initial configuration or firmware download).

NOTE: The LightTPD service starts along with ICU. LightTPD will stop when ICU is closed.

To Remove LightTPD from the C•CURE Server:

1. Confirm that there are no instances of ICU running on the victor Application Server.
2. On the server, use File Explorer to browse to [X:\Program Files \(x86\)\Tyco\CrossFire\Server Components\iSTAR\ICU](#) (where drive letter "X" is the installation location of C•CURE).
3. Manually delete the LightTPD folder inside the ICU folder.

Note: After deleting LightTPD, every time ICU is launched, the system will show the following error (clicking **OK** will resume ICU):



- Use the web page function on individual iSTAR panels to change firmware, as needed.
- iSTARs with firmware version 6.8.8 or above will have the ability to allow secure firmware downloads natively from C•CURE 9000 v3.00.

If you have any questions regarding this **Technical Advisory Bulletin**, please contact Technical Support.

North America & Latin America:

Toll Free: 1-800-507-6268 (option 3, 1) or 1-800-392-2873 (option 3, 1)

Hours: 8 AM – 8 PM Eastern

Access Technical Support: Access-support@jci.com

License Inquiries: ccurelicense@tycoint.com

EMEA:

Toll Free: 800-2255 8926

Direct: +31 475 352 722

Hours: 8 am to 6 pm CET

Access Technical Support: Access-support@jci.com

License Inquiries: sp-licensing-support@jci.com

Asia/Pacific:

Toll free: +800-2255 8926

Direct: +91-80-4199-0994

Hours: 9am to 6pm CST (China Time) and 9am to 7pm IST (India Time)

Access Technical Support: Access-support@jci.com

License Inquiries: sp-licensing-support@jci.com

[Complete Support Contact List](#)

Information furnished by Johnson Controls is believed to be accurate and reliable. However, no responsibility is assumed by Johnson Controls for its use, nor any infringements of other rights of third parties which may result from its use. No license is granted by implications or otherwise under any patent rights of Johnson Controls.

© 2022 Johnson Controls. All Rights Reserved.

Johnson Controls and the product names listed above are marks and/or registered marks. Unauthorized use is strictly prohibited. Product offerings and specifications are subject to change without notice. Actual products may vary from photos. Not all products include all features. Availability varies by region; contact your sales representative.